

quantum D 360 x 1000

Fully equipped precision sliding and screw-cutting lathe with fully enclosed feed gear for quick and comfortable switching of the feed pitches

Convincing arguments: quality, efficiency and price

- Induction-hardened and precision-ground heavily ribbed prismatic bed made of grey cast iron
- Camlock Spindle holding fixture ASA D 1 - 4"
- Oil-quenched hardened work spindle bedded in two adjustable precision taper roller bearings
- Guaranteed concentricity precision of the spindle nose less than 0.015 mm
- Smooth-running work spindle gearwheels, hardened and precision-ground
- Leadscrew and feed shaft drive easily switchable via oil-quenched feed gear
- Blocking mechanism avoids simultaneous use of leadscrew drive and feed shaft drive
- Tailstock may be shifted +/- 5 mm for taper turning
- Right-left-hand rotation can be switched with the help of the indexing spindle
- Machine lamp
- 2-step drive motor
- Electrical system by Siemens
- Low-voltage release, emergency stop switch and protective motor switch
- Removable bed gap
- Cover for leading spindle
- Footbrake
- Test certification
- Manufactured according to DIN 8606 (toolmaker's precision)

Model	D 360 x 1000
Item No.	340 1150
€ (VAT excl.)	5,490.00

Technical data	
Centre height	180 mm
Distance between centres ^{*)}	1,000 mm
Turning diameter (max.)	356 mm
Turning-Ø over saddle	220 mm
Turning-Ø without bridge	516 mm
Spindle hole	38 mm
Spindle holding fixture	Camlock D 1 - 4"
Spindle taper	MT 5
Spindle speeds, 16 steps	45 - 1,800 rpm
Pitch - Metric (37)	0.4 - 7 mm/rev
Pitch - Inch (28)	4 - 56 TPI
Longitudinal feeds (42)	0.043 - 0.653 mm/rev.
Crossfeeds (42)	0.015 - 0.220 mm/rev.
Top slide travel ^{*)}	100 mm
Cross slide travel ^{*)}	180 mm
Tailstock taper	MT 3
Tailstock-sleeve travel	120 mm
Main motor power, 2-step	1.5/2.4 kW/400 V/50 Hz
Coolant system	40 W
Dimensions (L x W x H)	1,920 x 740 x 1,194 mm
Net weight	880 kg

*Guideways travel are briefer during use of measuring gibs for digital displays

Extent of supply:

- 3-jaw chuck Ø 160 mm
- 4-jaw chuck Ø 200 mm with universally adjustable jaws
- Face plate Ø 320 mm
- Steady rest, rod opening 16 - 100 mm
- Follow rest, rod opening 16 - 95 mm
- Substructure fitted
- Coolant system
- Rear splash guard fitted
- Chuck protection
- Machine lamp
- Position stop with fine adjustment
- Spindle brake
- Operating tools
- Initial filling with high-grade Mobil oil

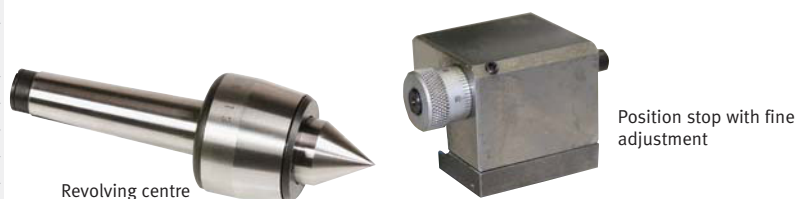
- Hardened and ground work spindle with 2 adjustable precision taper roller bearings
- Smooth-running work spindle gearwheels, hardened and precision-ground
- Enclosed fast acting feedgear mechanism
- High-precision quantum 3-jaw chuck self centering
- Removable bed gap
- Precision-machined slide
- Upper carriage rotation 360°
- Handwheels with adjustable precision scaling of 0.04/0.02 mm
- Quadruple tool holder
- All guideways adjustable due to tapered gibs
- Machine lamp
- Coolant system
- Tailstock adjustable for taper turning
- Tailstock sleeve and handwheel with adjustable precision scaling of 0.025 mm
- Induction-hardened and ground prismatic bed



Turning

Accessories	Item No.	€ (VAT excl.)
■ ROHM 3-jaw chuck Ø 200 mm	344 1531	409.00
■ ROHM 4-jaw chuck Ø 200 mm	344 1532	459.00
■ ROHM face plate Ø 260 mm	344 1538	519.00
■ Direct holding fixture Camlock D 1 - 4"		
■ Revolving centre MT 3	344 0703	50.00
■ Position stop with fine adjustment	344 1524	60.00
■ Cutting tool kit 11 pcs, 16 mm	344 1508	65.00
■ Cutting tool kit 7 pcs, 16 mm	344 1511	120.00
■ Universal collet chucking attachment 5C	344 1506	230.00
■ Collet kit 3 - 25 mm, 17 pcs, 5c	344 1509	300.00
■ Quick-action tool holder SWH 3-E	338 4303	429.00
■ Factory assembly quick-action tool holder	900 0400	95.00

More accessories from page 36 onwards



Revolving centre

Position stop with fine adjustment